

**PHC3 Antibody (C-Term)**  
**Purified Rabbit Polyclonal Antibody (Pab)**  
**Catalog # AP21862b**

**Specification**

---

**PHC3 Antibody (C-Term) - Product Information**

Application	WB, IHC-P,E
Primary Accession	<a href="#">Q8NDX5</a>
Reactivity	Human
Host	Rabbit
Clonality	polyclonal
Isotype	Rabbit IgG
Calculated MW	106162

**PHC3 Antibody (C-Term) - Additional Information**

**Gene ID** 80012

**Other Names**

Polyhomeotic-like protein 3, Early development regulatory protein 3, Homolog of polyhomeotic 3, hPH3, PHC3, EDR3, PH3

**Target/Specificity**

This PHC3 antibody is generated from a rabbit immunized with a KLH conjugated synthetic peptide between 819-850 amino acids from human PHC3.

**Dilution**

WB~~1:2000

IHC-P~~1:25

E~~Use at an assay dependent concentration.

**Format**

Purified polyclonal antibody supplied in PBS with 0.09% (W/V) sodium azide. This antibody is purified through a protein A column, followed by peptide affinity purification.

**Storage**

Maintain refrigerated at 2-8°C for up to 2 weeks. For long term storage store at -20°C in small aliquots to prevent freeze-thaw cycles.

**Precautions**

PHC3 Antibody (C-Term) is for research use only and not for use in diagnostic or therapeutic procedures.

**PHC3 Antibody (C-Term) - Protein Information**

**Name** PHC3

**Synonyms** EDR3, PH3

**Function** Component of a Polycomb group (PcG) multiprotein PRC1-like complex, a complex class required to maintain the transcriptionally repressive state of many genes, including Hox genes, throughout development. PcG PRC1 complex acts via chromatin remodeling and modification of histones; it mediates monoubiquitination of histone H2A 'Lys-119', rendering chromatin heritably changed in its expressibility.

#### Cellular Location

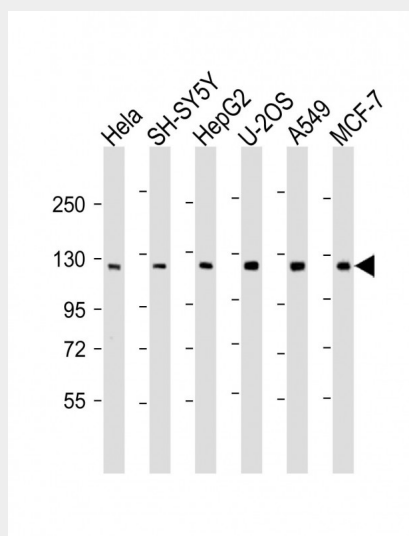
Nucleus

#### PHC3 Antibody (C-Term) - Protocols

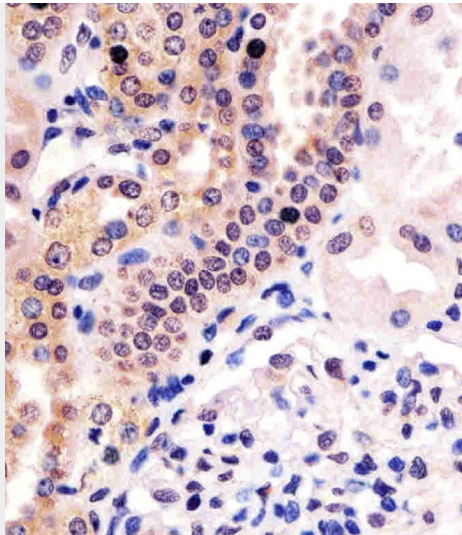
Provided below are standard protocols that you may find useful for product applications.

- [Western Blot](#)
- [Blocking Peptides](#)
- [Dot Blot](#)
- [Immunohistochemistry](#)
- [Immunofluorescence](#)
- [Immunoprecipitation](#)
- [Flow Cytometry](#)
- [Cell Culture](#)

#### PHC3 Antibody (C-Term) - Images



All lanes : Anti-PHC3 Antibody (C-Term) at 1:2000 dilution Lane 1: HeLa whole cell lysate Lane 2: SH-SY5Y whole cell lysate Lane 3: HepG2 whole cell lysate Lane 4: U-2OS whole cell lysate Lane 5: A549 whole cell lysate Lane 6: MCF-7 whole cell lysate Lysates/proteins at 20 µg per lane. Secondary Goat Anti-Rabbit IgG, (H+L), Peroxidase conjugated at 1/10000 dilution. Predicted band size : 106 kDa Blocking/Dilution buffer: 5% NFDM/TBST.



AP21862b staining PHC3 in human kidney tissue sections by Immunohistochemistry (IHC-P - paraformaldehyde-fixed, paraffin-embedded sections). Tissue was fixed with formaldehyde and blocked with 3% BSA for 0.5 hour at room temperature; antigen retrieval was by heat mediation with a citrate buffer (pH6). Samples were incubated with primary antibody (1/25) for 1 hour at 37°C. A undiluted biotinylated goat polyvalent antibody was used as the secondary antibody.

#### **PHC3 Antibody (C-Term) - Background**

Component of a Polycomb group (PcG) multiprotein PRC1-like complex, a complex class required to maintain the transcriptionally repressive state of many genes, including Hox genes, throughout development. PcG PRC1 complex acts via chromatin remodeling and modification of histones; it mediates monoubiquitination of histone H2A 'Lys-119', rendering chromatin heritably changed in its expressibility.

#### **PHC3 Antibody (C-Term) - References**

Tonkin E., et al. Hum. Genet. 111:435-442(2002).  
Levine S.S., et al. Mol. Cell. Biol. 22:6070-6078(2002).  
Hansen M.F., et al. Submitted (MAY-2001) to the EMBL/GenBank/DDBJ databases.  
Ota T., et al. Nat. Genet. 36:40-45(2004).  
Bechtel S., et al. BMC Genomics 8:399-399(2007).